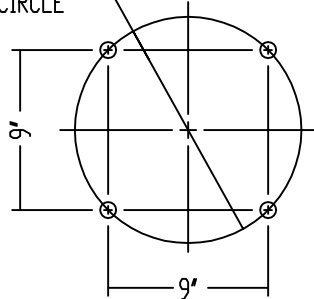
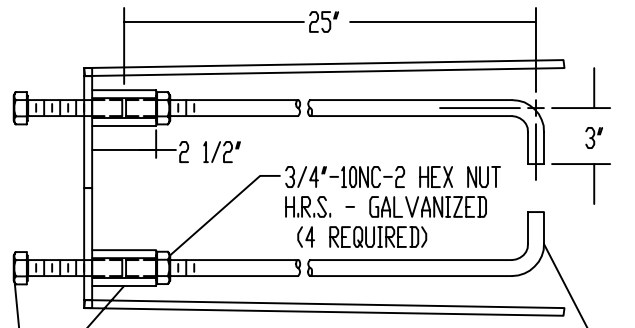


6061-T4 AL. ALLOY POLE CAP  
WITH (3) 1/4"-20NC-2 ST. STL.  
ALLEN HEAD CUP POINT SET SCREWS

12 3/4" DIA.  
BOLT CIRCLE



3/4"-10NC-2 X 2" LONG HEX HEAD BOLT,  
LOCKWASHER AND FLATWASHER - H.R.S GALV.  
(4 OF EACH REQUIRED)



3/4"-10NC-2 HEX NUT  
H.R.S. - GALVANIZED  
(4 REQUIRED)

3/4"-10NC-2 X 2 1/2" LONG HEX COUPLING  
H.R.S. - GALVANIZED (4 REQUIRED)

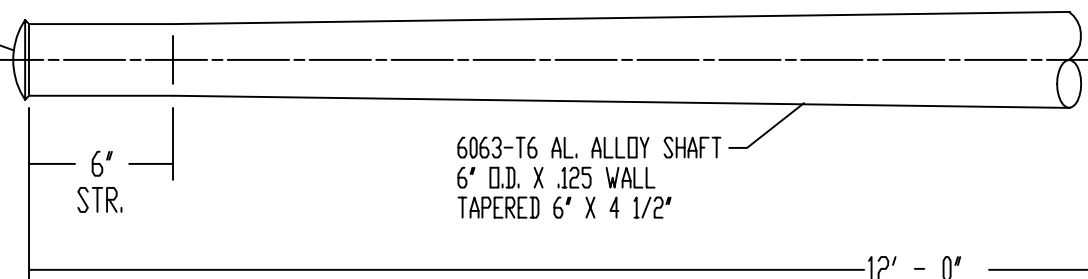
3/4" DIA. X 28" LONG ANCHOR ROD (4 REQUIRED)  
ANCHOR ROD TO BE 55,000 PSI MIN. YIELD STRENGTH  
PER AASHTO M314-90, GRADE 55. TOP 6" OF ROD TO  
BE GALVANIZED PER AASHTO M232 CLASS C, (ASTM A153).

NOTE: 6063 ASSEMBLY WITH .375 WALL OR LESS TO BE  
HEAT-TREATED TO T6 TEMPER AFTER WELDING.

356-T6 CAST AL. ALLOY BASE  
TYPE 'A' TBU-6" WITH GROUNDING  
SCREW PER DETAIL 'A'

1/4" THK. ABS PLASTIC DOOR  
ASSEMBLY WITH ULTRA-VIOLET  
INHIBITORS ( OUTSIDE SURFACE  
OF DOOR TO HAVE 2" X 3"  
SELF-ADHESIVE LABEL)

BOTTOM OF BASE TO BE COATED  
WITH BITUMINOUS PAINT



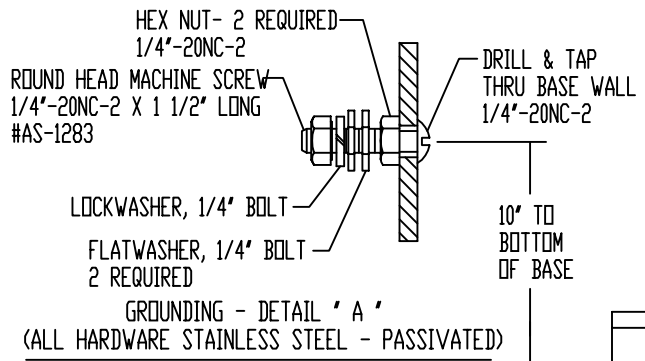
6063-T6 AL. ALLOY SHAFT  
6" O.D. X .125 WALL  
TAPERED 6" X 4 1/2"

4043 1/4

4043 1/8

PLASTIC

13 5/8" SQ.



HEX NUT- 2 REQUIRED  
1/4"-20NC-2  
ROUND HEAD MACHINE SCREW  
1/4"-20NC-2 X 1 1/2" LONG  
#AS-1283

DRILL & TAP  
THRU BASE WALL  
1/4"-20NC-2

LOCKWASHER, 1/4" BOLT  
FLATWASHER, 1/4" BOLT  
2 REQUIRED

10" TO  
BOTTOM  
OF BASE

GROUNDING - DETAIL 'A'  
(ALL HARDWARE STAINLESS STEEL - PASSIVATED)

P&K

ALTERATIONS					MATERIAL	P&K POLE PRODUCTS 84 Foundry St., Newark, N.J.	
ALT.	DESCRIPTION	DATE	BY	CH	STOCK SIZE	TITLE	
A	WAS 15' LONG ANCHORAGE	07-15-94	W/W		FINISH OR TEMPER	SP645512002G-71	
B	DELETED ANCHOR CLEATS	08-21-95	W/W			BERGEN CODE SP06-1200	
					CUSTOMER	DR. M.M.S.	11-23-84
						CH. W.W.W.	11-23-84
					BERGEN COUNTY DEPT. OF PUBLIC WORKS	APP.	
						SCALE	NONE

B-81399-2